

# A status assessment of the mesocarnivores (Mammalia: Carnivora) in Chelmos-Vouraikos National Park and Geopark

Despina Migli<sup>1</sup>, George Roussinos<sup>2</sup>, Panayiotis Rigogiannis<sup>2</sup>, George P. Mitsainas<sup>3</sup>

<sup>1</sup>Department of Zoology, School of Biology, Aristotle University of Thessaloniki, GR-54124 Thessaloniki, Greece

<sup>2</sup>Management Body of Chelmos-Vouraikos, 35 Ag. Alexios Str, GR 25001 Kalavryta, Greece

<sup>3</sup>Section of Animal Biology, Department of Biology, University of Patras, GR-26504 Patras, Greece

E-mail:despmigk@bio.auth.gr

## INTRODUCTION

The fauna of medium-sized mammals in Chelmos-Vouraikos National Park and Geopark was surveyed during the summer period of 2015. The survey focused on the priority species of the Habitats Directive, particularly the Eurasian otter (*Lutra lutra*), the golden jackal (*Canis aureus*) and the European wildcat (*Felis silvestris silvestris*). Both the Eurasian otter and the golden jackal are classified as 'Endangered' in the Red Data Book for Greek Vertebrates.

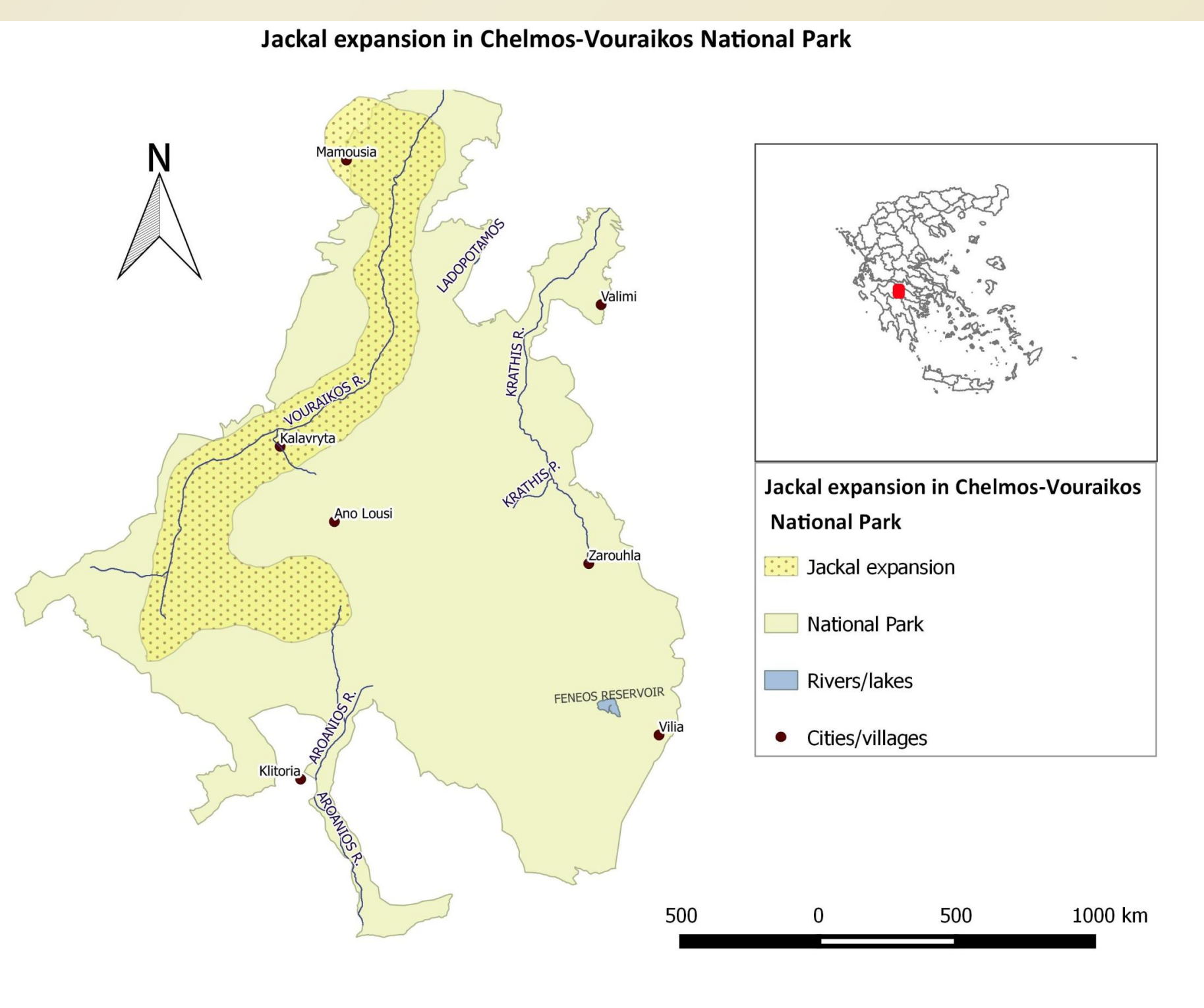
## METHODOLOGIES

Sampling comprised camera trappings, Bio Acoustic monitoring for the golden jackal and the implementation of the Standard Method for otter surveys.

### Golden jackal (*Canis aureus*)



20 calling stations were set, where recorded jackal howlings were broadcasted one hour after sunset

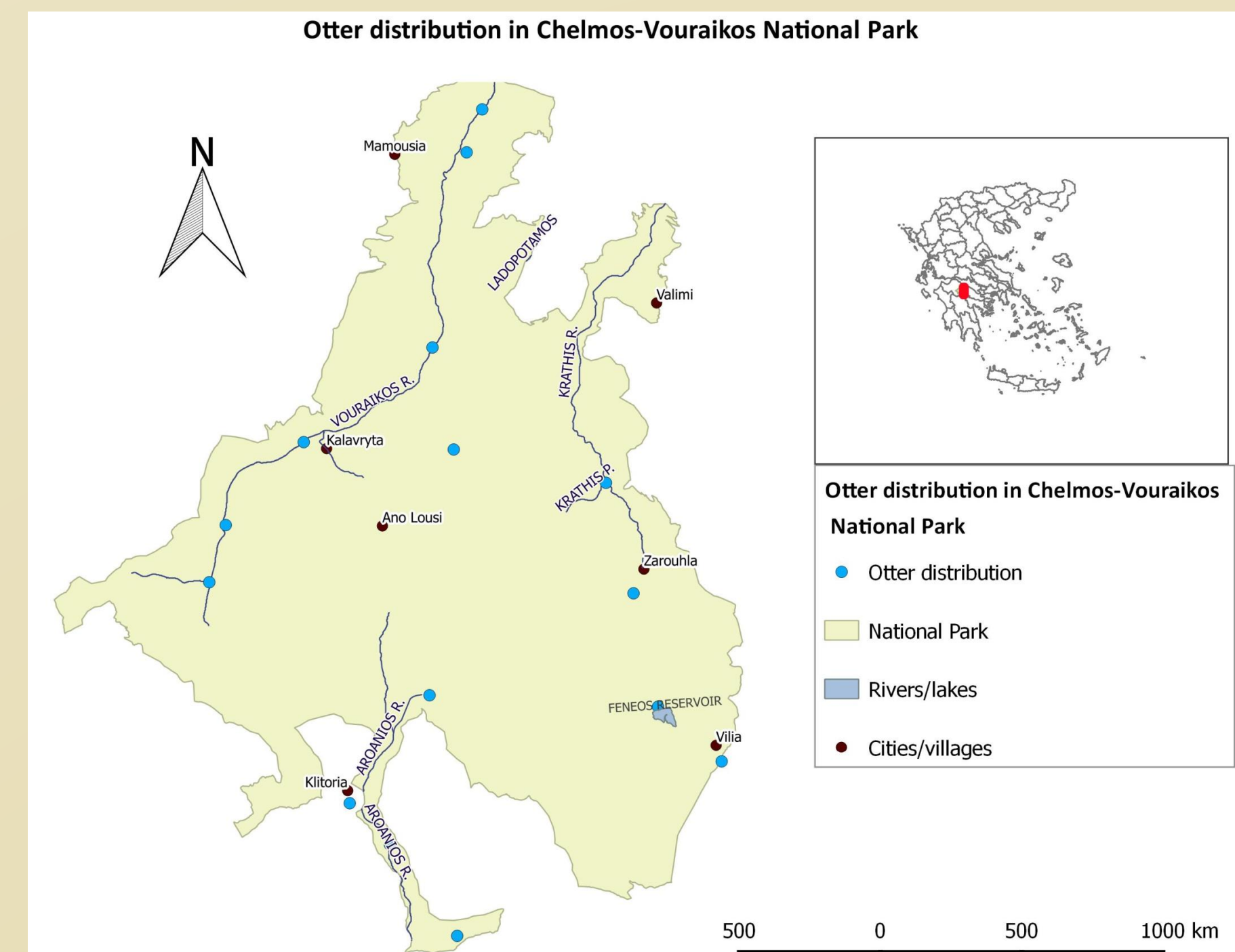


- 16-19 individuals were counted in total, forming 8 jackal groups
- 6 groups along Vouraikos gorge
- Jackals seem to have broadened their expansion within the last 5 years

### Otter (*Lutra lutra*)



20 sampling stations across rivers, ponds and streams were checked for otter spraints or footprints



- In 15 out of 20 sampling stations Otter spraints have been detected
- The overall percentage of positive stations (75%) surpasses the target of 70%, showing a good, healthy, viable otter population

Wildcat presence was not confirmed by the camera traps placed in the area of Chelmos-Vouraikos National Park within the framework of this research, indicating the need of a more thorough and extended survey. Foxes, badgers and beech martens proved to be the most prevalent mesocarnivores, which, together with roe deers, wild boars and hares, complete the wild fauna of medium mammals in the National Park.

